

2025 MODEL INFORMATION



CONCEPT.....	P.2
POINTS TO PUSH	P.3
CHANGES FROM STANDARD MODEL (JT1500Z/JW1500B)	P.4
COLOUR(S).....	P.9
SPECIFICATIONS	P.10

MODEL NAME

JET SKI ULTRA 160LX-S ANGLER

MARKETING CODE

JW1500C

USA SPECIFICATIONS SHOWN, AUSTRALIAN SPECIFICATIONS MAY DIFFER

Photos used in this Model Information generally depict the USA model.



CONCEPT

FISHING-FOCUSED JET SKI PERSONAL WATERCRAFT WITH VERSATILITY FOR FAMILY FUN

For the new JET SKI ULTRA 160LX-S ANGLER personal watercraft, finding the way to that perfect secluded fishing spot is a straightforward, enjoyable affair. Significantly more compact than

a fishing boat, its dimensions allow easy solo launch and retrieval, and give it access to shallow[†], out-of-the-way fishing spots, while a high-performance engine and sharp handling make it fun to ride for both fishing and general activities.

[†]The JET SKI ULTRA 160LX-S ANGLER should be operated in water 80 cm or deeper.

Kawasaki's well-established ULTRA watercraft platform provides the perfect base to create a PWC suited to enjoyable fishing and general family fun on the water. The ULTRA 160 Series runabout models are powered by a 160 PS* normally-aspirated engine and include features like Electronic Cruise Control, selectable modes, and a deep-V hull.

*Output measured at the crankshaft under controlled conditions. Actual performance may vary.

What makes this model special is its set of fishing-centred features. One of the first things to stand out when seated on the JET SKI ULTRA 160LX-S ANGLER is the 7" chartplotter located just to the right of the main instrument panel. It is clear and easy to read, making it simple and fun to find where the fish are hiding. When it comes time to go catch those fish, the ANGLER is equipped with specially designed side floats, a flat fishing bench seat to facilitate movement on the craft while fishing, a rear rack that holds a cooler, fishing rods and gear, and another rod holder at the front. Special colour and graphics signify that this PWC is made for fishing.

When the fishing is done and it's time for family enjoyment, the ANGLER works well as a general-purpose PWC with the powerful engine, excellent handling, and convenient features that come as part of the ULTRA platform.

The ability to go fishing with speed, style and enjoyment and still have a PWC ready to take the family out to play makes the ANGLER the ultimate tool for good times on the water.

POINTS TO PUSH

01 FISHING EQUIPMENT

A well-thought-out set of equipment is the key to enjoying the pastime of fishing with ease and convenience. The JET SKI ULTRA 160LX-S ANGLER offers a built-in chartplotter/transducer to find the fish, a large cooler, and handy rack with detachable storage packs to keep rods and gear, in addition to a layout designed to facilitate movement around the craft while floating and casting.

NEW 7" Garmin Chartplotter/Transducer - P.6

Garmin's high-quality Echomap UHD2 7cv chartplotter with 7" display is fitted in an easy-to-see location near the main TFT screen. It offers a wide range of options for easy navigating and fish finding.

Functional Storage

A well-thought-out storage system offers a total storage capacity of 168.5 litres. The 124-litre sealed front compartment is complemented by the 40-litre Easy-Access Storage (behind the handle, accessible from either the left or the right), a 1.7-litre waterproof compartment (inside the Easy-Access Storage), and 2.8-litre Easy-Access Rear Pocket (aft of the rear seat).

Easy-Access Cleats

Built-in cleats provide convenient cinch points when mooring at a dock. Their clever design helps redirect water overboard.

Accent Lights

Stylish LED lights built into the bumper contribute to the fierce expression, and create a unique image, visually setting these JET SKI models apart from the PWC of other brands.

NEW Front Fishing Rod Holder - P.8

The fishing rod holder at the front is designed to be used while stopped. It offers a place for the angler to leave their rod while performing other tasks, then retrieve it when needed.

160 PS NA Marine 1,498 cm³ In-Line Four Engine

Responsive and reliable, the normally aspirated, liquid-cooled 1,498 cm³, In-Line 4-cylinder marine engine balances its high performance with clean emissions, good fuel economy, and smooth, family-friendly power delivery.

02 ULTRA PLATFORM

ULTRA 160 Series models combine Kawasaki's responsive and reliable normally aspirated engine with a hull acclaimed for its handling and precision. The ULTRA model platform, which also includes features like Electronic Cruise Control, Launch Control Mode and Power Mode selection, is proven and popular, making it the ideal base for the JET SKI ULTRA 160LX-S ANGLER. It is compact enough to allow solo launching and retrieval, able to access secluded, shallow-water fishing spots, and offers strong engine performance to get to those spots quickly.

7" TFT Display

Large, easy-to-read 7" full-colour TFT instrumentation offers multiple display modes, jog-dial control, Bluetooth connectivity, and even infotainment features.

KSRD

Kawasaki Smart Reverse with Deceleration electrically deploys the reverse bucket. Activated with a thumb switch on the right handle, it enables thrust to be controlled with one hand. When deployed, the reverse bucket contributes to deceleration.

Deep-V Hull: Superb Handling

Loaded with technology from Kawasaki's championship-winning machines, the hull handles with precision and control, and a high level of seaworthiness. The hull's 413 mm^{†1} draft suits it well to getting into and out of shallow-water^{†2} fishing spots.

^{†1}Draft without passengers is 290 mm; with three 75 kg passengers, 370 mm.

^{†2}The JET SKI ULTRA 160LX-S ANGLER should be operated in water 80 cm or deeper.

NEW Bench Seat for Fishing - P.4

The two-piece fishing bench seat is flat to allow two riders to turn sideways when fishing. The flat design makes it easy to move back and forth and provides access to the cooler and tackle gear in the rear.

03 FLAGSHIP EQUIPMENT

As a part of the ULTRA 160 Series, the JET SKI ULTRA 160LX-S ANGLER's sport and leisure riding performance is complemented by a full suite of features that offer a high level of comfort and convenience for users.

NEW Special Colour and Graphics - P.8

"ANGLER" written on the side of the seat and a fish logo on the rear of the craft signify that this is a model designed for fishing.

NEW ORCA Hard Cooler - P.7

An ORCA brand 55 L (58 qt) hard cooler is equipped along with a rear rack designed to hold it perfectly in place. It is extremely handy for fishing, but can also be used for all-around convenience when out riding with the family.

NEW Rear Rack with Fishing Rod/Gear Holders - P.7

Multipurpose storage packs attached to the rear rack include four fishing rod holders and smaller pockets for various fishing gear, providing assurance that everything is stowed in its proper place while riding, and facilitating access once at the fishing spot. The storage packs can be removed at attached together for easy portability.

NEW Side Floats - P.4

Special side floats provide additional buoyancy and offer a place to put your feet when seated sideways while fishing. They also add stability when stopped and at low speeds, while not compromising the excellent ULTRA 160 handling.

Electronic Cruise Control

Highly convenient for long-distance cruising, this mode fixes speed (rpm) at the level specified. Cruising speed is easily adjusted with the push of button.

Launch Control Mode

When accelerating with the system engaged, the trim is automatically optimised. Two modes allow either single or repeated launches.

Power Mode Selection

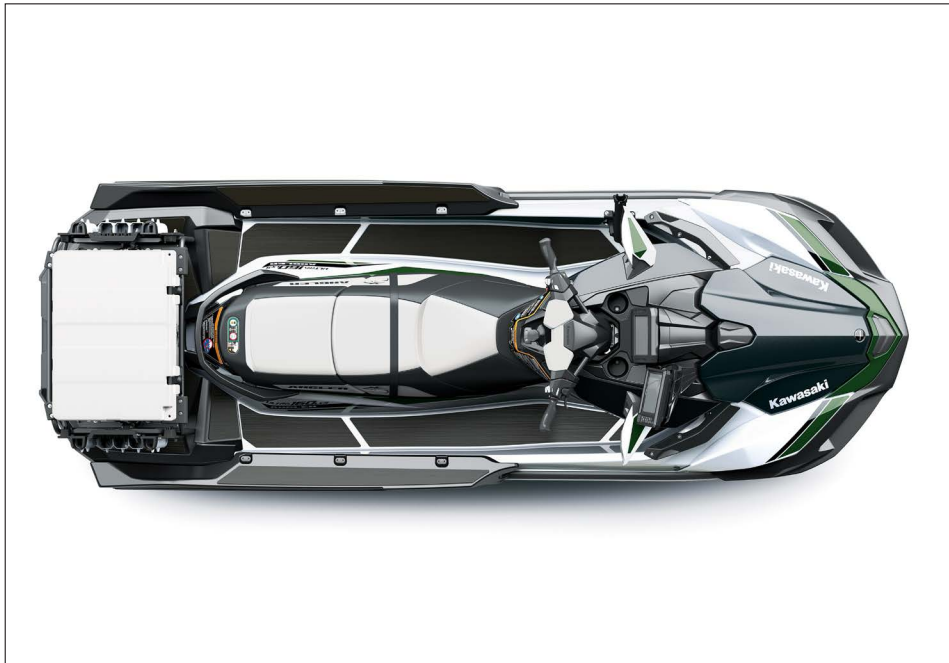
In addition to Smart Learning Operation (SLO)-Mode, riders can select from Full, Middle and Low Power Operation.



CHANGES FROM STANDARD MODEL (JT1500Z/JW1500B)

Exterior and Ergonomics Designed for Fishing

A flat bench seat exclusive to the ANGLER makes it simple to sit sideways or move around while fishing, but also has a shape designed to support the rider while in motion. Large side floats keep the JET SKI stable at slow speed or when or stopped, and also provide added space for foot placement when fishing.



* The two-piece fishing bench seat is flat enough to allow sitting sideways and shifting around while fishing. The flat design makes it easy to move back and forth and provides access to the cooler and tackle gear in the rear. (Photo 1)



* Side floats attached on both sides offer added stability at slow speeds and when stopped to make it easy to fish. (Photo 2)



* Plenty of space for foot placement is provided by the side floats when sitting sideways to fish. Careful consideration was given to the shape of the side floats to ensure a comfortable knee angle when fishing. Non-slip mats on the top of the side floats offer added traction.

* The side floats are not so large as to impede sport riding, allowing the ULTRA 160LX-S ANGLER to retain the excellent handling quality of the ULTRA 160 Series. (Photo 3)



Full Suite of Angling Equipment

Much consideration was given to outfitting the ULTRA 160LX-S ANGLER with the kind of equipment needed for a day on the water. Whether the goal is to carry fishing rods and gear around or keep cold food and beverages on hand, the fitted accessories are a major part of what makes the ANGLER the ideal companion for fun on the water.



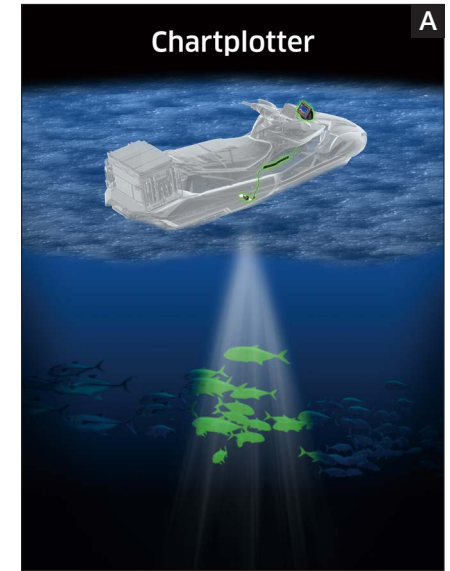
* Garmin 7" Echomap chartplotter/transducer is mounted to the top-right of the main TFT display and is easy to see while seated. The location combines styling, excellent visibility and ease of use. The placement is designed so as not to impede the view of the right rearview mirror. (Photo 4)



* The chartplotter/transducer excels in detecting fish with a top-class sharp and clear sonar. Its high-contrast display also provides excellent legibility, and it can navigate from recorded routes. (Photo 5)



* The transducer's sensor is positioned so air bubbles do not interfere with detection accuracy during normal riding. The sensors are built into the hull so there is no risk of damage when loading/off-loading from a trailer or running in shallow water. (Illustration A)



* Rear rack is made with sturdy $\varnothing 22.2$ mm steel pipe. Multipurpose storage packs attached to the rear rack have four slots (two on each side) to hold fishing rods and six smaller pockets with covers (three on each side) to hold various fishing gear. These offer a secure solution to keep rods in place while in motion, allowing the rider to enjoy the PWC's capabilities without worrying about losing their important fishing gear. The storage packs are detachable, and once removed they can be attached together for easy portability. (Photos 6-7)



6



7

* An ORCA brand 55 L (58 qt) cooler is included, and is kept steadily in place at the rear by the rear rack. (Photos 8-9)



8



9

* In addition to holding the cooler, the rear rack can also hold a variety of other items, making it an extremely convenient setup to have on the water.

* At the front is a fishing rod holder designed to be used for fishing while the craft is stopped. It is a convenient place to rest the fishing rod while performing other tasks. (Photo 10)

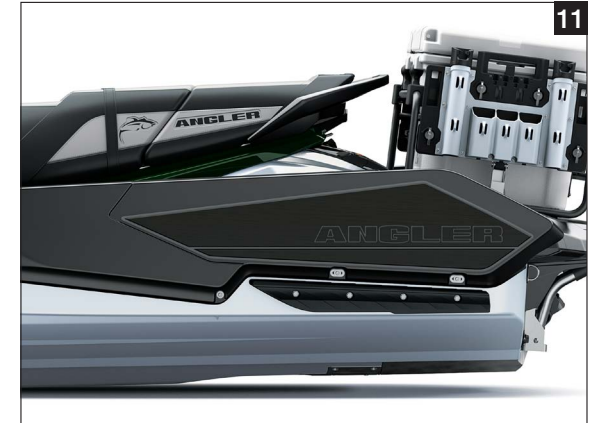


Rearview Camera

* The rearview camera found on the base model ULTRA 160 LX-S is not compatible with the ULTRA 160 LX-S ANGLER's cooler, so it has been omitted.

Special Colour and Graphics

* On the side of the bench seat is the word "ANGLER" and a fish logo, while the side floats feature the word "ANGLER." (Photo 11)



* The Crystal White / Timberline Green colouring fit the outdoor theme well for a sharp-looking, intentional machine. (Photo 12)



COLOUR(S)

* Crystal White / Timberline Green



SPECIFICATIONS

JW1500CSF

DIMENSIONS	
Overall length	3,580 mm
Overall width	1,260 mm
Overall height	1,180 mm
Curb mass	479 kg
Fuel capacity	80 litres
PERFORMANCE	
Maximum power	118 kW {158 hp} / 7,500 min ⁻¹ (USA) 118 kW {160 PS} / 7,500 min ⁻¹ (CAN/AUS) 112 kW {152 PS} / 7,500 min ⁻¹ (EUR/JPN)
Maximum torque	152 N·m {15.5 kgf·m} / 5,750 min ⁻¹ (USA/CAN/AUS) 144 N·m {14.7 kgf·m} / 5,750 min ⁻¹ (EUR/JPN)

ENGINE	
Type	4-stroke In-Line Four
Valve system	DOHC, 16 valves
Bore x Stroke	83 x 69.2 mm
Displacement	1,498 cm ³
Compression ratio	10.6:1
Fuel supply	Fuel injection: ø60 mm x 1
Cooling system	Inducted water
Lubrication system	Forced lubrication, semi-dry sump
Starting system	Electric
Ignition system	Digital
DRIVE SYSTEM	
Coupling	Direct drive from engine
Type	Axial flow, single stage
Thrust	4,250 N {433 kgf} (USA/CAN/AUS) 4,130 N {421 kgf} (EUR/JPN)
Impeller diameter	ø155 mm
Steering	Steerable nozzle

KAWASAKI TECHNOLOGY



The specifications mentioned here apply to and have been achieved by production models under standard operating conditions. We intend only to give a fair description of the vehicle and its performance capabilities but these specifications may not apply to every machine supplied for sale. Kawasaki Motors, Ltd. reserves the right to alter specifications without prior notice. Equipment illustrated and specifications may vary to meet individual markets. Available colours may vary by market.